

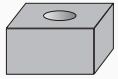
Machining Excellence

News magazine 4Q 2023

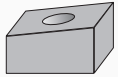


MaxPro Drill

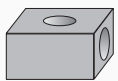
Maximum performance to a great drilling experience



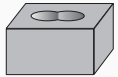
Flat Surface



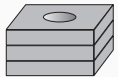
Inclined Surface



Crossing Hole



Chain Drilling



Stack Drilling



Palbit's **MaxPro Drill** indexable drilling tool is a versatile and high-performance tool designed for drilling operations on various surfaces.

Whether drilling through multiple layers of materials or working on complex drilling projects, the MaxPro Drill offers reliable performance and exceptional results.

PRODUCT RANGE

DIAMETER

Ø14mm to Ø50mm

LENGTH

2xDc to 5xDc



SOKX-MP



SOKX-MS



XOKX-MP



XOKX-MS



ADVANTAGES

- Anti-chipping and wear resistance properties;
- Longer tool life;
- Superior chip geometries;
- Stable evacuation of chips;
- Optimized blade design;
- Cost-effective;

Helipro 20290

Unlock the power of high material removal rates



Palbit's latest innovation, the **HeliPro 20290** brings the well-known XPET 1706 insert to a new level of productivity.

With the disposal of this in a helical configuration we are able to achieve higher depths of cut, allowing you to speed up production with higher material removal rates (MRR).

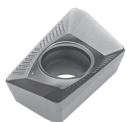
PRODUCT RANGE

DIAMETER

Ø50mm to Ø125mm

LENGTH

Ø63mm to Ø79mm



XPET-LP



XPET-MP



XPET-LS



XPET-LN



ADVANTAGES

- High material removal rate;
- High cutting depth;
- Superior stability;
- Superior chip evacuation;
- Versatility;
- Cost-effective;

FEATURES

- With 4 or 5 stages;
- From 3 to 6 flutes (12 to 30 inserts);

Phoenix Shield

The new era of speed, strength and power

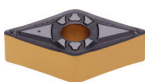


Palbit's **Phoenix Shield** series is an innovative combination of a highly dense and hard nanostructured coating base material.

This new grade series features nanolayer optimization and cutting edge stability, achieved with pre-and post-coating process technologies, designed to improve adhesion between layers and fine-tune tensile stress within coating.



CNMG-PM



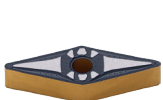
DNMG-PM



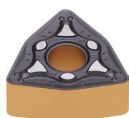
SNMG-PM



TNMG-PM



VNMG-PM



WNMG-PM

ADVANTAGES

- Higher cutting speeds;
- More productivity;
- Improved resistance to crater wear;
- Superior heat resistance;

FEATURES

- Aluminum Oxide layer with optimized microstructure;
- Gold flank faces for easier wear detection;

GRADES

- PH2G115;
- PH2G125;



Linepro 20190 | 20290

New LS chipbreaker for XPET 10 & 17



The **LS chipbreaker**, specifically engineered to excel in machining steel, stainless steel, cast iron and heat-resistant materials.

We are improving the versatility of our Linepro 20190* & 20290 milling cutting tools with a wider range of radius, allowing you to shape parts the way you want.

*Two types of toolholders in Linepro 20190:
- Type A - radius 04, 08, 12 & 16;
- Type B - radius 20, 32 & 40;

PRODUCT RANGE

SIZES

10 & 17

RADIUS

04, 08, 12, 16, 20, 32 & 40

R2,0mm



XPET 100320-LS

R3,2mm



XPET 100332-LS

R2,0mm



XPET 170620-LS

R3,2mm



XPET 170632-LS



ADVANTAGES

- Predictable and reliable tool life;
- High surface quality with 90 degree angle;
- Better productivity parameters;

FEATURES

- Optimized geometry achieves smooth machining;
- Reinforced cutting edge due to the rake angle;

GRADES

- PHP920 (P & K);
- PHH930 (M & S);

Machining Excellence



HEADQUARTERS

PALBIT. S.A.

P.O.Box 4 - Palhal

3854-908 - Branca ALB - Portugal

T (+351) 234 540 300 | F (+351) 234 540 301

palbit@palbit.pt | www.palbit.pt

Branch office:

PALBIT México, S de RL de CV

C/ Alfonso Esparza Oteo 37

Colonia Guadalupe Inn

Alcaldía Álvaro Obregón

01020 Ciudad de México

T (+52) 5555 454 543 | F (+52) 5552 509 190

info@palbit.com.mx | www.palbit.pt/mx

Branch office:

PALBIT Brasil

Av. João XXIII, nº20 Salas 41 e 65

Vila Gilda, Sto André, SP

CEP: 09190-500 – São Paulo

T (+55) 011 25 343 648

palbit@palbit.com.br | www.palbit.pt/br

